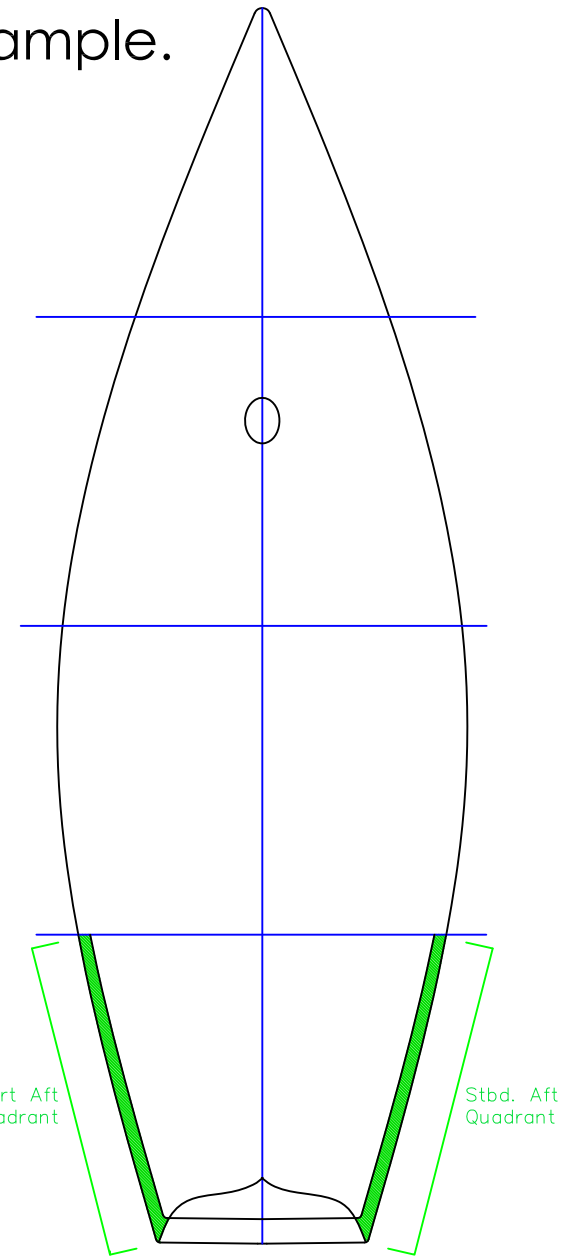
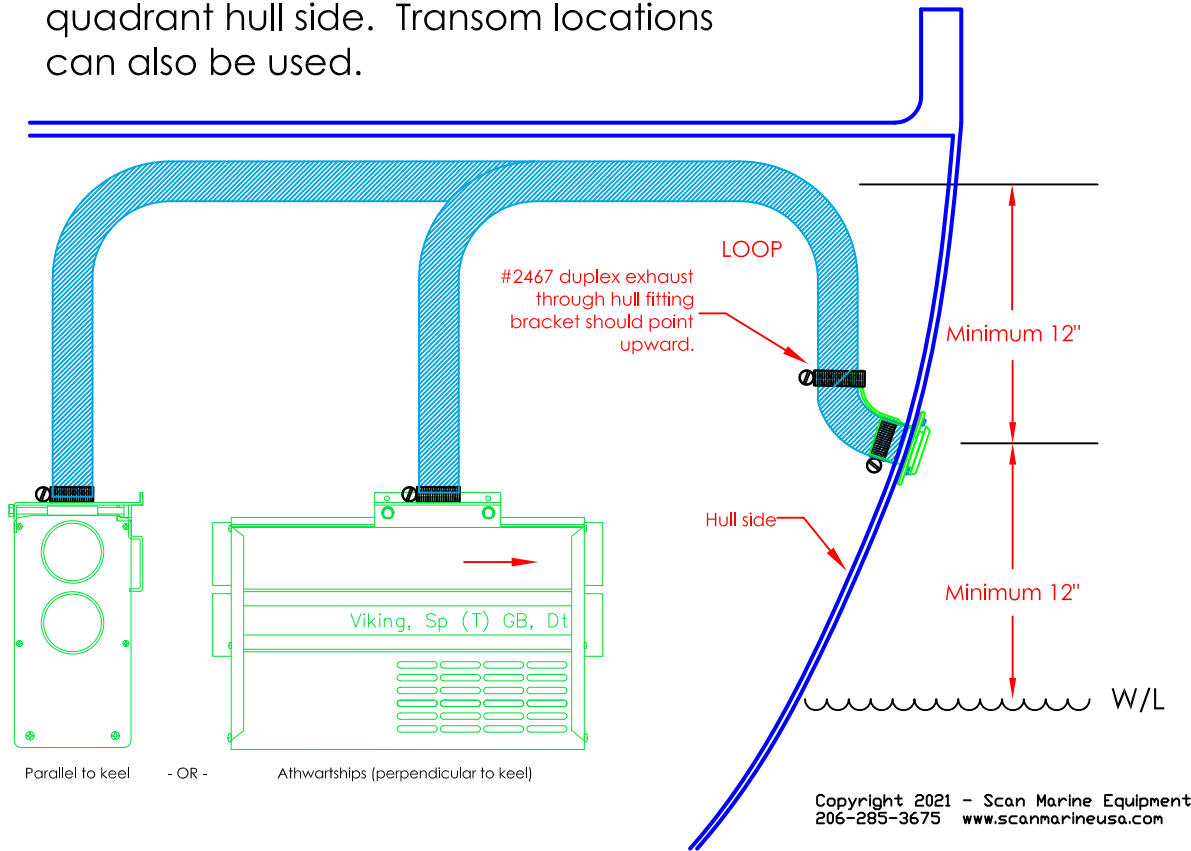




Wallas diesel heater sailboat exhaust routing example.

Example for installations in the aft quadrant hull side. Transom locations can also be used.



All Wallas diesel heaters can be mounted parallel to keel or athwartships. Once the wall bracket is mounted, the flow can run from right to left or left to right by reversing the heater position in the bracket.

Notes:

- Maximum allowed total exhaust hose run is 6.5 feet (2 meters).
- Heater can be lower, higher or the same height as the through hull fitting.