



wallas®



SCAN MARINE/WALLAS

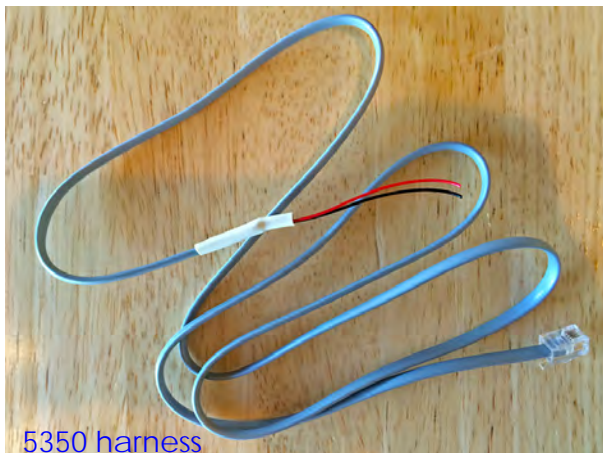
High altitude operation of Nordic Dt, XC Duo, 85D series stoves & Dt/GB heaters:

The Wallas 85D (2006) and newer stoves are extremely versatile, efficient products. These stove/heaters will burn cleanly and efficiently from sea level to 4,200 feet (1300 meters) without any special considerations. The newer Nordic Dt, XC Duo and 85Dt models have an optional 10 second start button push for high altitude operation, or the following additional switching feature can be added to any of the above mentioned products:

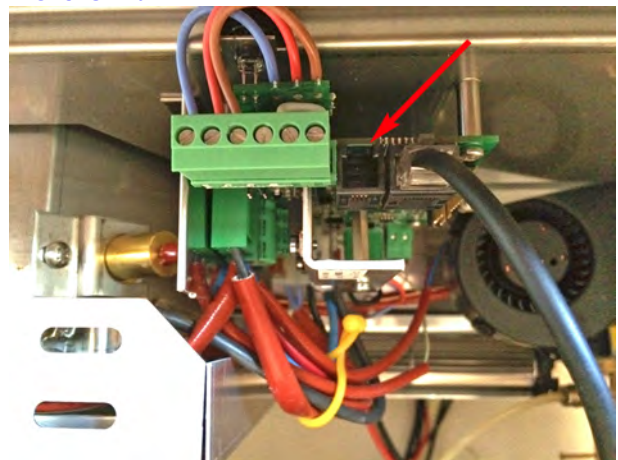
For operation above 4,200 feet, there is a set of electrical contacts that can be connected, which will lean out the fuel mixture and allow for a clean, efficient burn at operating altitudes up to 10,000 feet (≈3,050 meters).

PLEASE NOTE: If the device is above 4,200', the high altitude setting should be activated before starting the device. This setting is most important during the start cycle.

Any 85D, Nordic Dt or XC Duo or Dt heater product can be fitted with a simple harness #5350, which plugs into the stove next to the control panel socket (on bottom of Dt heaters). The harness terminates in two wires (wire colors may vary), that can be connected to any single pole/single throw switch. The switch should be closed when starting and running above 4,200 feet.



Nordic Dt:



Activation altitudes are defined by estimated barometric pressure to be expected at a given altitude. Local weather conditions can affect actual performance.

Questions? Call 1-888-606-6665 toll free! Thanks.